

BALDOR® • RELIANCE 

Product Information Packet

M1522T

2/.89HP,1725/1140RPM,3PH,60HZ,182T,3628M

Part Detail							
Revision:	Z	Status:	PRD/A	Change #:		Proprietary:	No
Type:	AC	Elec. Spec:	36WGW065	CD Diagram:	CD0013	Mfg Plant:	
Mech. Spec:	36A001	Layout:	36LYA001	Poles:	04/06	Created Date:	
Base:	RG	Eff. Date:	01-23-2020	Leads:	6#16		

Specs			
Catalog Number:	M1522T	Insulation Class:	F
Enclosure:	TEFC	Inverter Code:	Not Inverter
Frame:	182T	KVA Code:	F
Frame Material:	Steel	Lifting Lugs:	No Lifting Lugs
Output @ Frequency:	2.000 HP @ 60 HZ	Locked Bearing Indicator:	No Locked Bearing
	.890 HP @ 60 HZ	Motor Lead Quantity/Wire Size:	6 @ 16 AWG
Synchronous Speed @ Frequency:	1800 RPM @ 60 HZ	Motor Lead Exit:	Ko Box
Voltage @ Frequency:	230.0 V @ 60 HZ	Motor Lead Termination:	Flying Leads
XP Class and Group:	None	Motor Type:	3628M
XP Division:	Not Applicable	Mounting Arrangement:	F1
Agency Approvals:	UR	Product Family:	General Purpose
	CSA	Pulley End Bearing Type:	Ball
Auxillary Box:	No Auxillary Box	Pulley Face Code:	Standard
Auxillary Box Lead Termination:	None	Pulley Shaft Indicator:	Standard
Base Indicator:	Rigid	Rodent Screen:	None
Bearing Grease Type:	Polyrex EM (-20F +300F)	Shaft Extension Location:	Pulley End
Blower:	None	Shaft Ground Indicator:	No Shaft Grounding
Current @ Voltage:	5.800 A @ 230.0 V	Shaft Rotation:	Reversible

Design Code:	B	Shaft Slinger Indicator:	No Slinger
Drip Cover:	No Drip Cover	Speed Code:	2S-2W-VT
Duty Rating:	CONT	Motor Standards:	NEMA
Electrically Isolated Bearing:	Not Electrically Isolated	Starting Method:	Direct on line
Feedback Device:	NO FEEDBACK	Thermal Device - Bearing:	None
Front Face Code:	Standard	Thermal Device - Winding:	None
Front Shaft Indicator:	None	Vibration Sensor Indicator:	No Vibration Sensor
Heater Indicator:	No Heater	Winding Thermal 1:	None
		Winding Thermal 2:	None

Nameplate NP1256L										
CAT.NO.	M1522T									
SPEC.	36A01W65									
HP	2/.89									
VOLTS	208-230									
AMP	5.8/3.2									
RPM	1725/1140									
FRAME	182T				HZ	60			PH	3
SER.F.	1.15		CODE	F	DES	B		CLASS	F	
NEMA-NOM-EFF			PF							
RATING	40C AMB-CONT									
CC									USABLE AT 208V	
DE	6206				ODE	6205				
ENCL	TEFC		SN							

Parts List		
Part Number	Description	Quantity
SA033897	SA 36A01W65	1.000 EA
RA029925	RA 36A01W65	1.000 EA
36CB3004	36 CB CASTING W/1.09 DIA LEAD HOLE @ 6:0	1.000 EA
36GS1000SP	GASKET-CONDUIT BOX, .06 THICK #SV-330 LE	1.000 EA
51XB1016A08	10-16X 1/2HXWSSLD SERTYB	2.000 EA
11XW1032G06	10-32 X .38, TAPTITE II, HEX WSHR SLTD U	1.000 EA
HW3001B01	BRASS CUP WASHER, FOR #10 SCREW	1.000 EA
36EP3104A01	FREP MACH ASSEMBLY FOR ROUTING	1.000 EA
HW4500A01	1641B(ALEMITE)400 UNIV, GREASE FITT	1.000 EA
HW5100A05	WVY WSHR F/205 & 304 BRGS	1.000 EA
36EP3100A01SP	PUEP ASSEMBLY FOR ROUTING PURPOSES	1.000 EA
HW4500A01	1641B(ALEMITE)400 UNIV, GREASE FITT	1.000 EA
XY2520A12	1/4-20 HEX NUT, DIRECTIONAL SERRATIONS	4.000 EA
51XB1214A16	12-14X1.00 HXWSSLD SERTYB	1.000 EA
36FH4009A102	IEC FH GREASER PRIMED	1.000 EA
51XW1032A06	10-32 X .38, TAPTITE II, HEX WSHR SLTD S	3.000 EA
36CB4516	36 LIPPED CB LID - GALVANNEAL	1.000 EA
37GS1001SP	GASKET, CONDUIT BOX LID, .06 THICK LEXID	1.000 EA
51XW0832A07	8-32 X .44, TAPTITE II, HEX WSHR SLTD SE	4.000 EA
HW2501E16	KEY, 1/4 SQ X 1.750	1.000 EA
HA7000A02	KEY RETAINER RING, 1 1/8 DIA, 1 3/8 DIA	1.000 EA
85XU0407S04	4X1/4 U DRIVE PIN STAINLESS	2.000 EA
MJ1000A02	GREASE, MOBIL POLYREX EM - 124047	0.050 LB
36FN3000A01SP	EXFN, PLASTIC, 7.00 OD, .912 ID	1.000 EA

Parts List (continued)		
Part Number	Description	Quantity
MG1000G27	MED CHARCOAL METALLIC GREY 400-0096	0.022 GA
HA3101A25	THRUBOLT 1/4-20 X 11.000 OHIO ROD	4.000 EA
LB1119N	WARNING LABEL	1.000 EA
LC0013	CONNECTION LABEL	1.000 EA
NP1256L	ALUM UL CSA CC INDUSTRIAL MOTOR A60	1.000 EA
36PA1001	PKG GRP, PRINT PK1017A06	1.000 EA
MN416A01	TAG-INSTAL-MAINT no wire (1200/bx) 3/19	1.000 EA

Accessories		
Part Number	Description	Multiplier
36-3301	C FACE KIT	A8
36EP1304A62SP	FLANGE MTD ENDPLATE 182-4TD -ENCL (LESS	A8

AC Induction Motor Performance Data

Record # 61296 - Typical performance - not guaranteed values

Winding: 36WGW065-R002	Type: 3628M	Enclosure: TEFC
-------------------------------	--------------------	------------------------

Nameplate Data				230 V, 60 Hz: High Speed Connection	
Rated Output (HP)	2/.89			Full Load Torque	6 LB-FT
Volts	230			Start Configuration	direct on line
Full Load Amps	5.8/3.2			Breakdown Torque	16.5 LB-FT
R.P.M.	1725/1140			Pull-up Torque	12.7 LB-FT
Hz	60	Phase	3	Locked-rotor Torque	14.7 LB-FT
NEMA Design Code	B	KVA Code	F	Starting Current	33.4 A
Service Factor (S.F.)	1.15			No-load Current	2.2 A
NEMA Nom. Eff.	0	Power Factor	0	Line-line Res. @ 25°C	3.58 Ω
Rating - Duty	40C AMB-CONT			Temp. Rise @ Rated Load	62°C
S.F. Amps				Temp. Rise @ S.F. Load	77°C
				Locked-rotor Power Factor	69.7
				Rotor inertia	0.263 LB-FT ²

Load Characteristics 230 V, 60 Hz, 2 HP

% of Rated Load	25	50	75	100	125	150	S.F.
Power Factor	52	67	85	87	95	92	92
Efficiency	69.6	77.5	78.4	78.1	77	73.7	77.4
Speed	1775	1750	1736	1710	1691	1647	1699
Line amperes	2.6	3.6	4.2	5.4	6.2	7.8	5.88

Performance Graph at 230V, 60Hz, 2.0HP Typical performance - Not guaranteed values

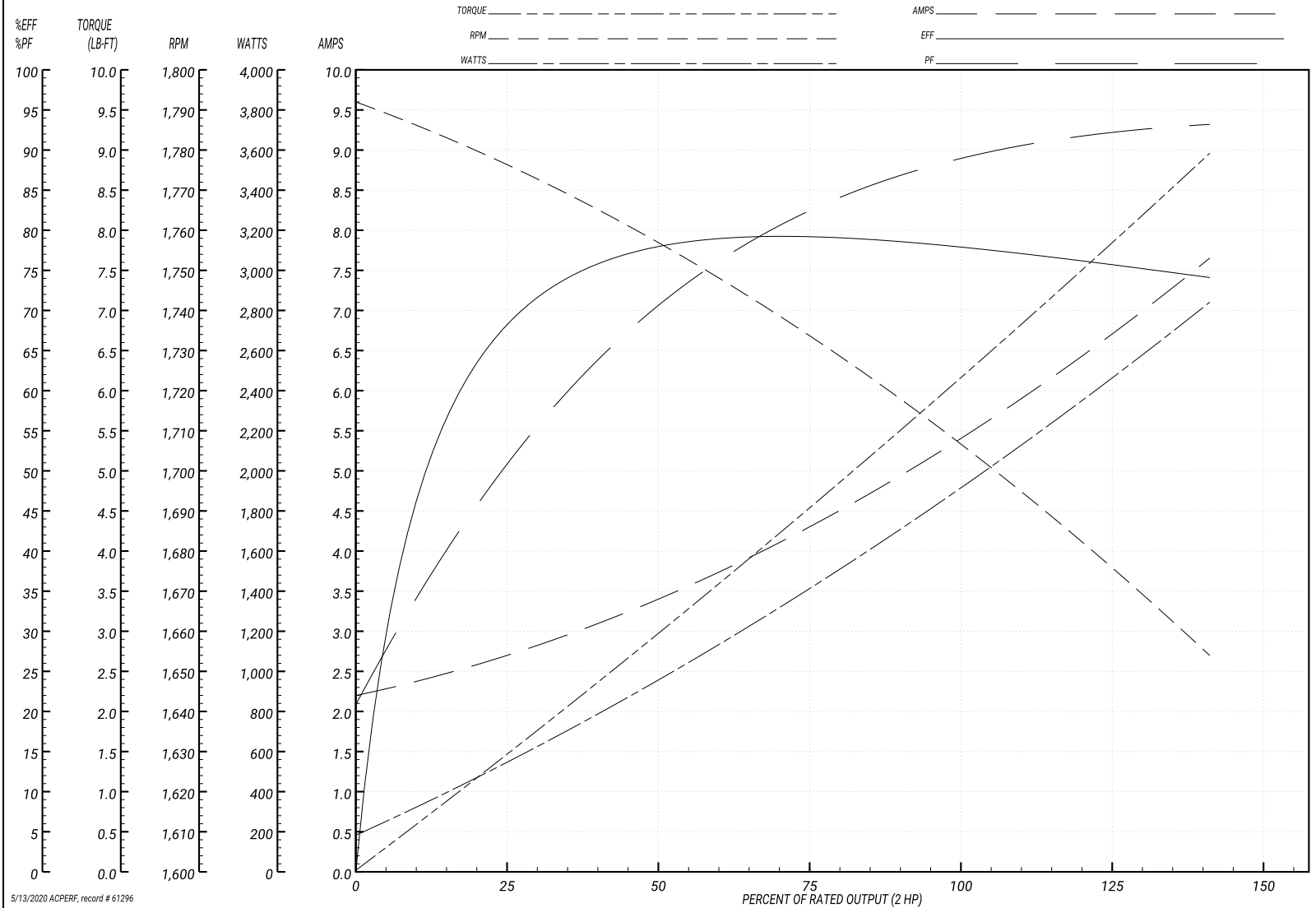
ABB Motors and Mechanical Inc.

WINDING # 36WGW065

Typical performance - not guaranteed values.

2 HP 3 PH 60 HZ 1710 RPM 230 V 3628M

TORQUES(LB-FT): PO=16.5 PU=12.7 LR=14.7 LRA=33.4



5/13/2020 ACPERF, record # 61296

AC Induction Motor Performance Data

Record # 61297 - Typical performance - not guaranteed values

Winding: 36WGW065-R002	Type: 3628M	Enclosure: TEFC
-------------------------------	--------------------	------------------------

Nameplate Data				230 V, 60 Hz: Low Speed Connection	
Rated Output (HP)	2/.89			Full Load Torque	4 LB-FT
Volts	230			Start Configuration	direct on line
Full Load Amps	5.8/3.2			Breakdown Torque	13 LB-FT
R.P.M.	1725/1140			Pull-up Torque	8.2 LB-FT
Hz	60	Phase	3	Locked-rotor Torque	8.7 LB-FT
NEMA Design Code	B	KVA Code	F	Starting Current	17.8 A
Service Factor (S.F.)	1.15			No-load Current	2.4 A
NEMA Nom. Eff.	0	Power Factor	0	Line-line Res. @ 25°C	6.62 Ω
Rating - Duty	40C AMB-CONT			Temp. Rise @ Rated Load	47°C
S.F. Amps				Temp. Rise @ S.F. Load	54°C
				Locked-rotor Power Factor	67.3
				Rotor inertia	0.263 LB-FT ²

Load Characteristics 230 V, 60 Hz, 0.89 HP

% of Rated Load	25	50	75	100	125	150	S.F.
Power Factor	31	48	61	68	75	77	72
Efficiency	51.8	62.4	68.7	71.4	72.4	71.9	72
Speed	1190	1182	1172	1163	1151	1134	1156
Line amperes	2.6	2.8	3	3.4	3.8	4.4	3.64

Performance Graph at 230V, 60Hz, 0.89HP Typical performance - Not guaranteed values

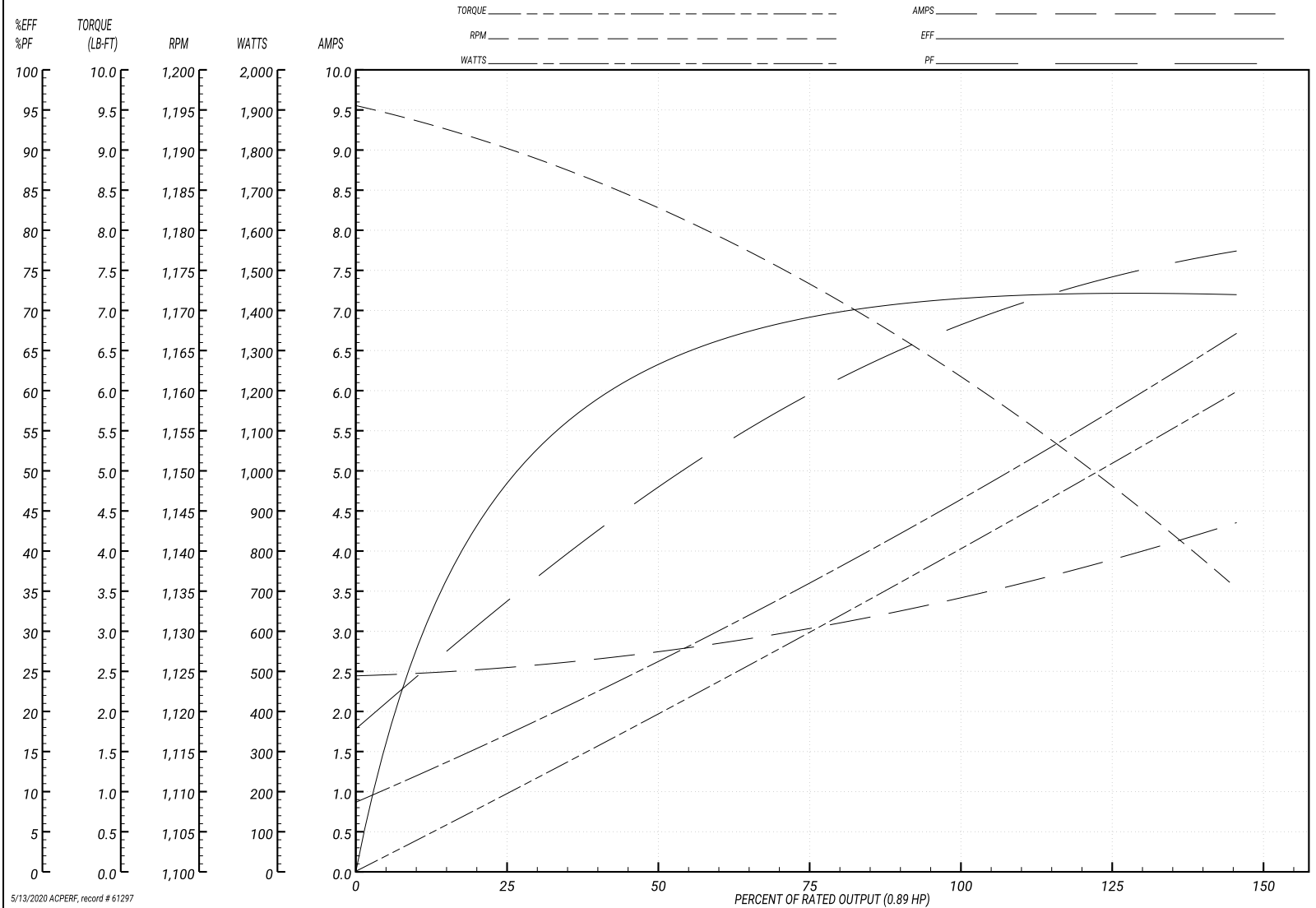
ABB Motors and Mechanical Inc.

WINDING # 36WGW065

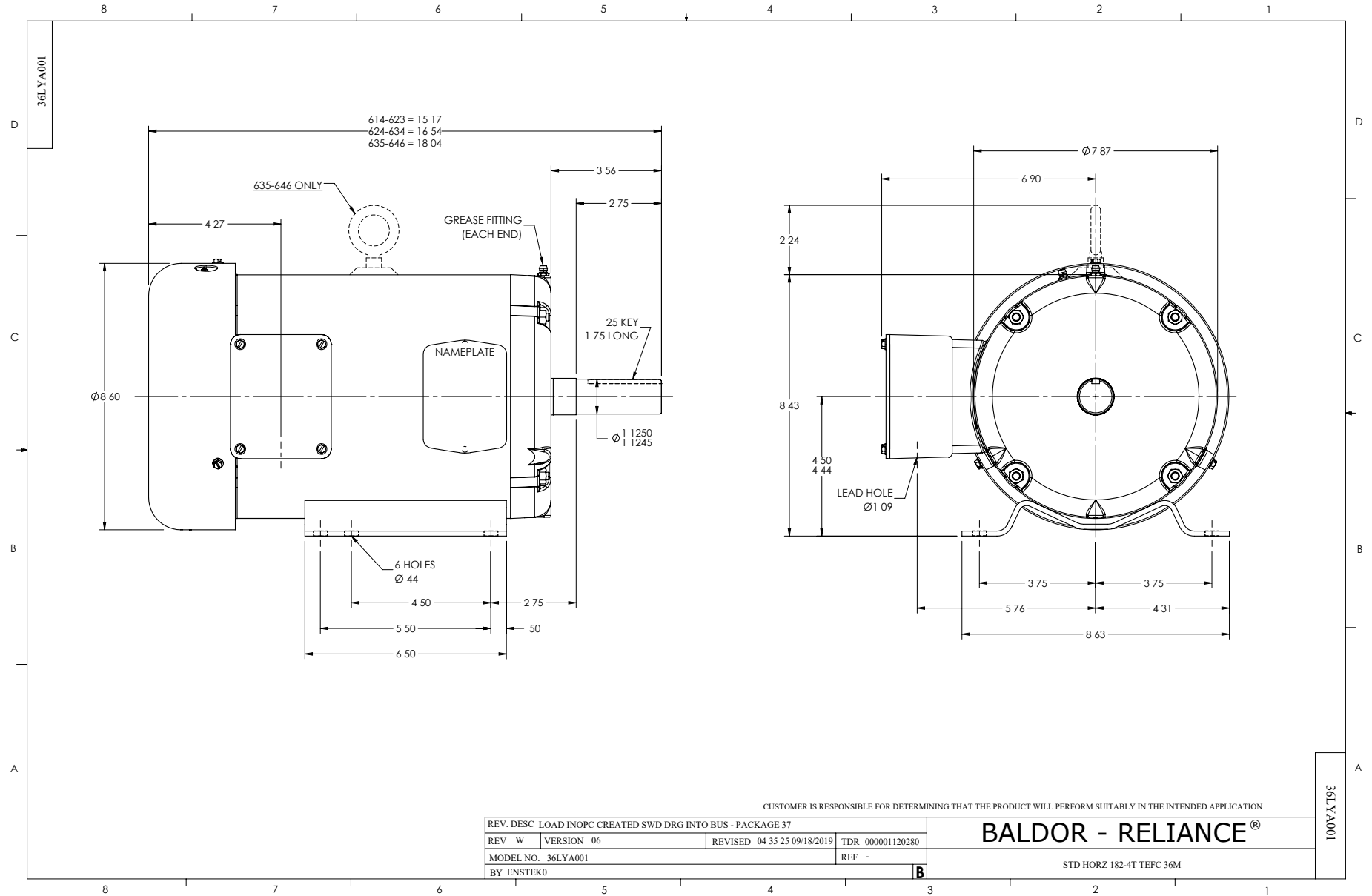
Typical performance - not guaranteed values.

0.89 HP 3 PH 60 HZ 1163 RPM 230 V 3628M

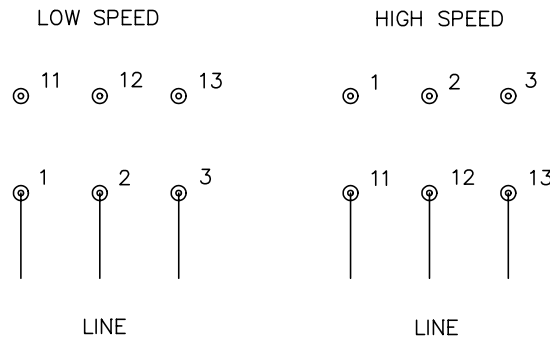
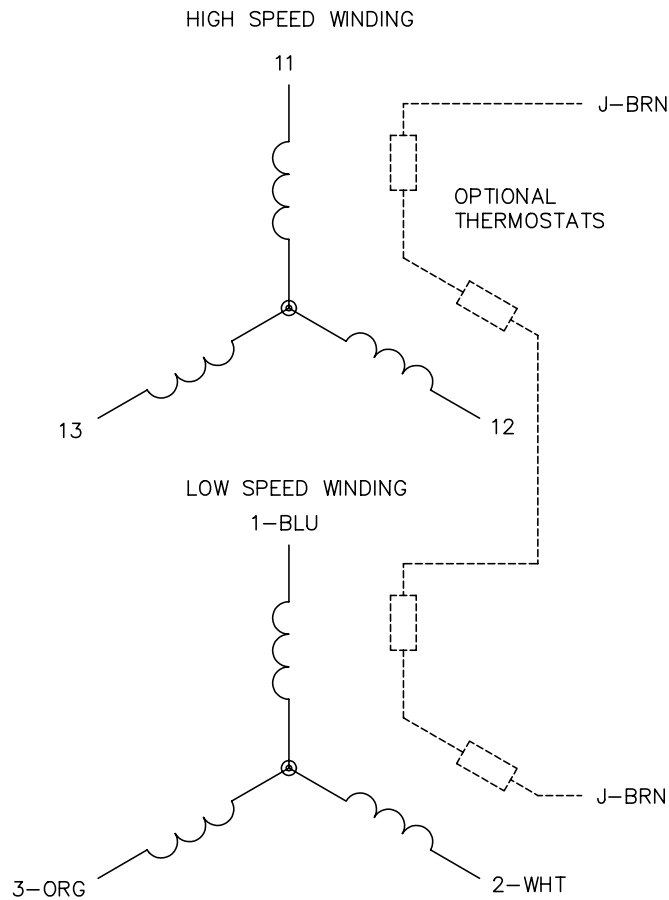
TORQUES(LB-FT): PO=13 PU=8.2 LR=8.7 LRA=17.8



5/13/2020 ACPERF, record # 61297



CD0013



NOTES:

1. INTERCHANGE ANY TWO LINE LEADS TO REVERSE ROTATION.
2. OPTIONAL THERMOSTATS ARE PROVIDED WHEN SPECIFIED.
3. ACTUAL NUMBER OF INTERNAL PARALLEL CIRCUITS MAY VARY.
4. LEAD COLORS ARE OPTIONAL. LEADS MUST ALWAYS BE NUMBERED AS SHOWN.

REV. DESC: REVISE TO SHOW OPTIONAL COLORS			
REV. LTR: D	BY: JLP	REVISED: 01/22/99 8:50	TDR: 0171435
Ω10003		FILE: AAA00005143	MDL: -
		MTL: -	

BALDOR ELECTRIC Co.

3PH, SV, 6 LEADS, 2-SPEED 2-WINDING

CD0013